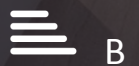




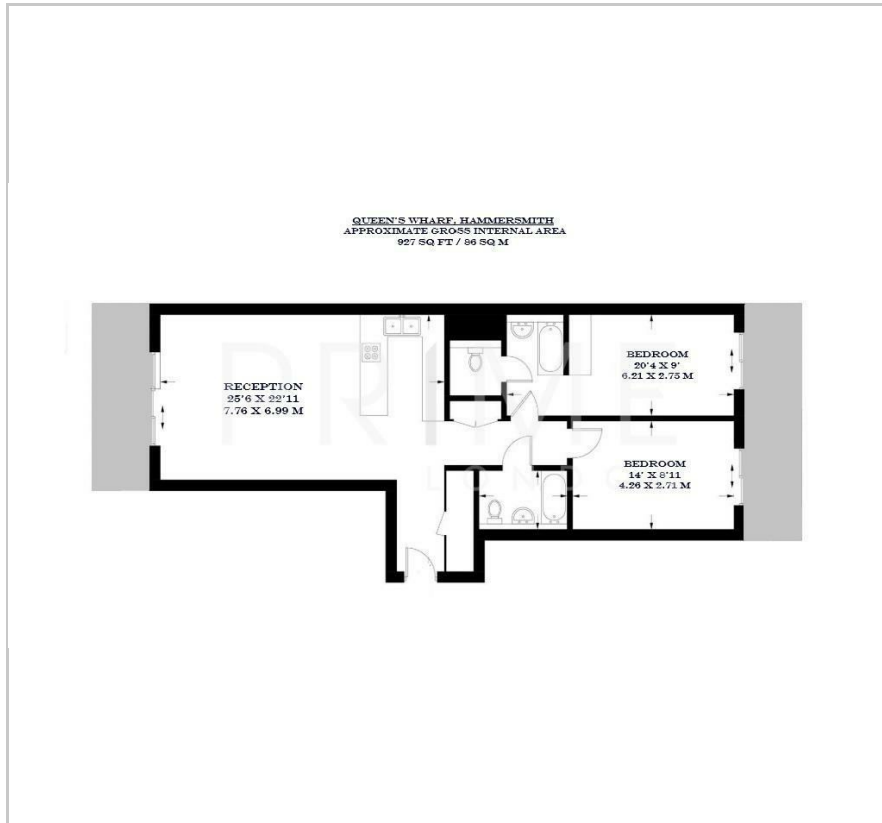
Queen's Wharf

2 Crisp Road, Hammersmith, W6 9PF

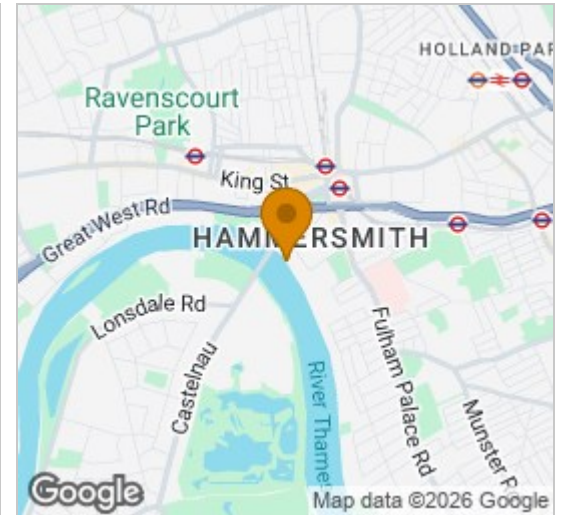
£899 Per Week



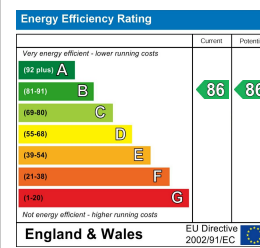
Floor Plan



Area Map



Energy Efficiency Graph



Viewing

By appointment. Contact us on 0207 052 1075 if you wish to arrange a viewing appointment for this property, or require further information.

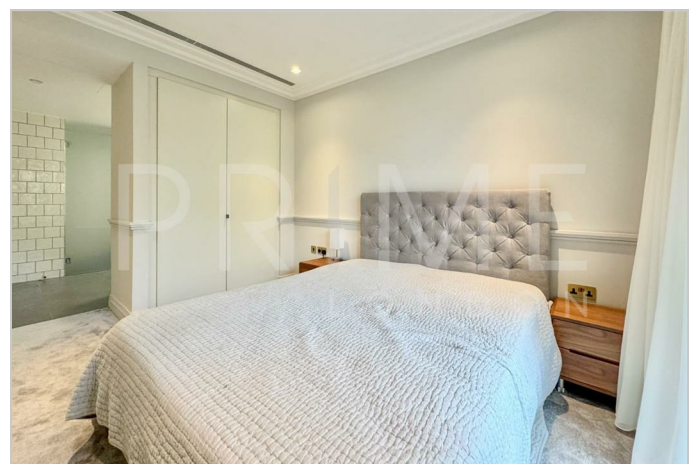
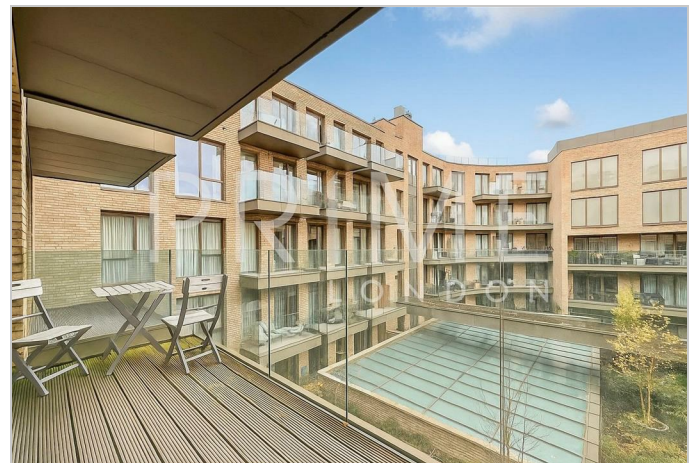
- Two bedroom apartment
- 927 sq ft (86 sqm)
- Private balcony with river views
- Six minute walk to Hammersmith Station
- Residents' roof terrace and communal gardens
- 24 hour concierge

This beautifully presented two bedroom apartment, situated within the prestigious Queen's Wharf riverside development, is available for lease through Prime London.

Offering 927 sq ft (86 sqm) of living space, the property features an expansive open plan reception with river views and a contemporary kitchen complete with Miele appliances. Both bedrooms are well proportioned and benefit from sleek en-suite bathrooms, with an additional family bathroom for guests. The apartment also benefits from a private balcony with views of the River Thames.

Residents of Queen's Wharf enjoy a 24 hour concierge and a beautifully landscaped residents' roof terrace with panoramic river views. The development also offers an on-site restaurant, café and bar, along with immediate access to the riverside walkway.

For transport, Hammersmith Underground station is just a stone's throw away and provides excellent connectivity across Central London.



These particulars, whilst believed to be accurate are set out as a general outline only for guidance and do not constitute any part of an offer or contract. Intending purchasers should not rely on them as statements of representation of fact, but must satisfy themselves by inspection or otherwise as to their accuracy. No person in this firm's employment has the authority to make or give any representation or warranty in respect of the property.